

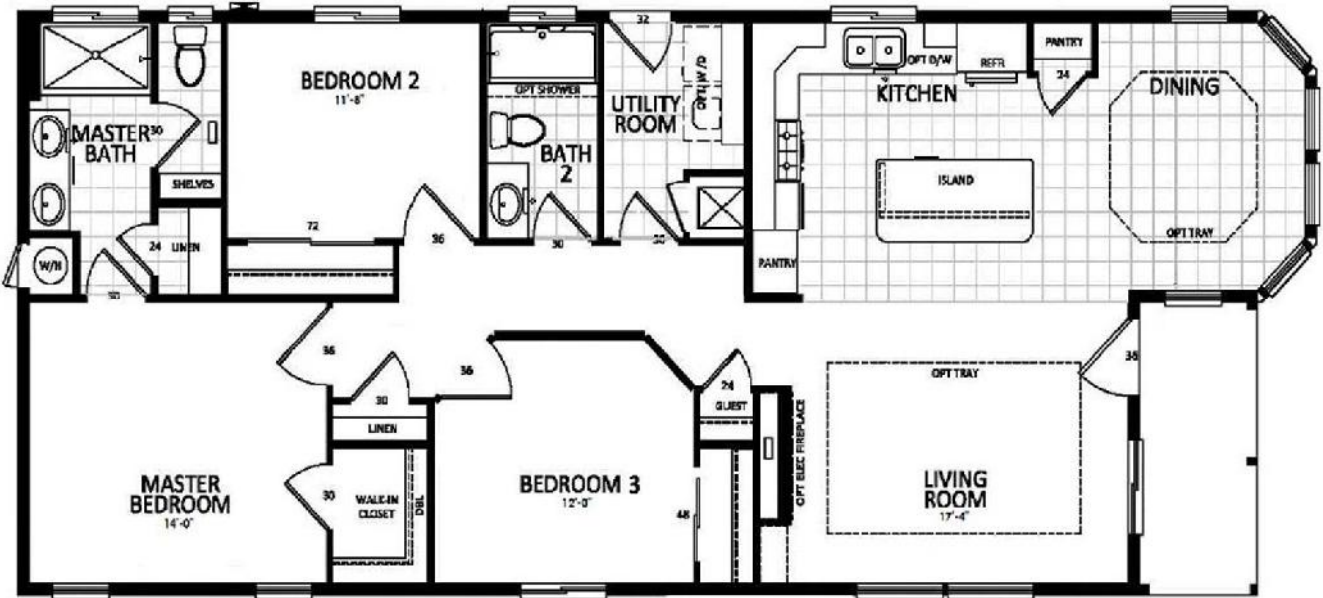


MH Advantage Homes

Model: SRS-139H

● 3 Bedrooms ● 2 Baths ● 1370 Sq. Ft.
Approximate Footprint: 24' x 56'

Series 1



Images may show options that may be available at an additional cost



USMODULAR, INC.

We build Faster, Better, Greener, and for LESS!

FULL SERVICE DESIGN BUILD GENERAL CONTRACTOR

We ♥ Referrals

951-679-9907, ext 1
www.USModularinc.com
Info@USModularinc.com

CA Contractor Lic. No. 943047
CA HCD Dealer Lic. No. DL1241679

MHBA
MODULAR
HOME BUILDERS ASSOCIATION

Modular Building Institute

PROUDLY BUILT BY A MEMBER OF

MODULAR
BUILDING INSTITUTE
The Voice of Commercial Modular Construction™

LEARN MORE ABOUT THE
MODULAR CONSTRUCTION INDUSTRY AT
MODULAR.BIZ

BBB Accredited Business A+ Rating

BBB ACCREDITED BUSINESS

Due to continuous product development and improvement, prices, specifications, and materials are subject to change without notice or obligation. Square footage and other dimensions are approximate. Exterior images may be artist renderings and are not intended to be an accurate representation of the home. Renderings, photos and floor plans may be shown with optional features or third-party additions.

Interior

- 9ft Sidewalls with Flat Ceiling Throughout
- ½" Tape & Texture Drywall Throughout
- Hand-Finished Knock-Down Ceiling
- Crown Molding in Living Room, Dining Room, Kitchen & Hall
- Semi-Gloss Interior Paint—Flat Ceiling Paint
- Hardwood Component Cabinets with Flat Panel Doors, Hidden Hinges, White Lining and Adjustable Overhead Shelves
- 2-Panel Interior Doors with Mortised Nickel Hinges & Single Lever Door Handles
- 36" Wide Passage Door on Bedrooms
- By-Pass Wardrobe Doors per Plan
- 42" Wide Hallway per Plan
- 36" X 60" Full Size Mirror in Walk-In Closet per Plan
- Shirt & Skirt Double Wardrobe Shelves in Master Bedroom Walk-In Closet per Plan
- Upgrade 3 ¼" Residential Base Board Molding
- Upgrade Dining Room Chandelier
- Shaw Stain Safety™ Treated Carpet & Rebond Pad
- No-Wax Congoleum® Diamondflor Vinyl Floor Covering in Kitchen, Dining Room, Baths & Utility
- 2" White Faux Wood Window Blinds
- Wood Shelves and Poles in all Closets

Kitchen

- Tall Hardwood Overhead Cabinets
- 28" Lazy Susan in Corner Base Cab per Plan
- Recessed LED Can Lights
- 6" Ceramic Tile Backsplash
- Whirlpool® Brand Name Appliances (Choice of Black or White)
- 18.1 cu ft Frost-Free Refrigerator
- 30" Deluxe Gas Range with Electronic Ignition, Window, Clock & Timer & Range Hood Vent
- Adjustable Overhead and Base Cabinet Shelves
- Stainless Steel Sink
- Delta® Single Lever Faucet w/ Pull-Out Sprayer
- Drawer-Over-Door Cabinets with Drawer Bank
- Deep Cabinet over Refrigerator
- Large Gourmet Kitchen Island

Baths

- 60" Fiberglass Walk-In Shower with Enclosure Master Bath
- 36" High Countertop both Baths
- 3-Door Linen & Drawer Bank in Master Bath
- Dual Sinks in Master Bath per Plan

Baths Cont.

- 60" 1-Piece Fiberglass Tub/Shower with Single Lever Diverter in Guest Bath
- Delta® Brand Name Metal Faucets
- China Sink with Overflow & Pop-Up Drain
- Elongated Water-Saver Toilets
- Vanity Strip Light & Exhaust Fan with Light
- Beveled Medicine Cabinets
- Vanity Mirror with Beveled Edge
- 6" Ceramic Tile Backsplash
- Ventilated Window per Plan
- Towel Bar & Tissue Holders

Exterior

- Upgrade R33-11-22 Insulation
- 4 :12 Roof Pitch Roof With Dormer & Porch
- Dual-Glazed Vinyl Framed Low-E Windows
- Cempanel® Siding with 25-Year Limited Warranty
- Owens Corning™ Shingles with 25-Year Limited Warranty
- 2" X 6" Floor Joists 16" On Center
- 5/8" Tongue & Groove OSB Floor Decking
- 2" X 4" Exterior Sidewalls 16" On Center
- Upgrade 36" X 80" Craftsman 3-Lite In-Swing Front Door with Deadbolt
- Choice of In-Swing Rear Door with Deadbolt
- 12" Front & Rear Overhangs & 6" Side Eaves per Plan

Utility, Safety & Energy

- Toe-Kick Registers in Kitchen & Baths
- 100 AMP Exterior Electrical Panel Box
- 40-Gallon Gas Water Heater
- Smoke Detectors with Battery Backup
- 56,000 BTU Gas Furnace
- Plumbed for Washing Machine & Gas Dryer
- Recessed Dryer Vent Box
- Shelf Over Washer/Dryer Area
- Metal Shut-Off Valves Throughout
- Exterior Light at Front & Rear Doors
- Rocker-Type Light Switches
- Three-Way Light Switch in Hall per Plan
- G.F.I. Protected Outlets in Kitchen & Baths
- Foundation ready floor
- **7 Year Factory Warranty**

Consult your USModular representative for other site completed requirements

